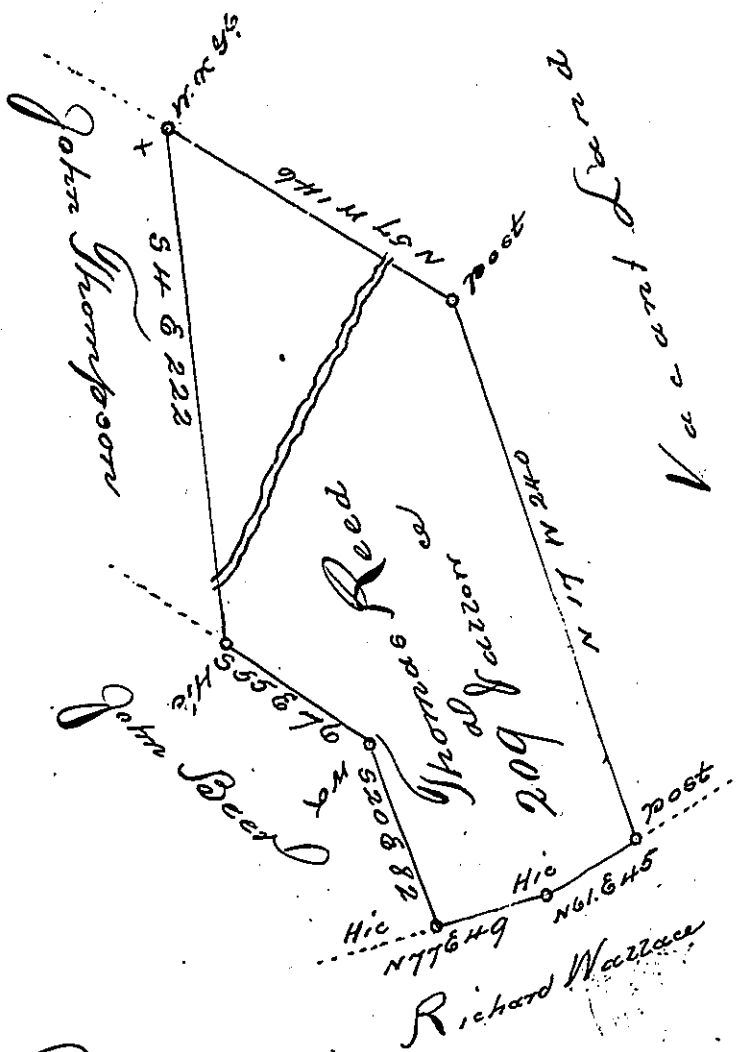


A. 77-21



Survey'd to Thomas Reed on the 22^d day of March, 1786. the above de-
 scribed tract of two hundred & nine acres & allowance of six p. Cent, situate
 on the north side of Conemaugh River, adjoining land of William Esparf
 on the East in Armstrong Township Westmoreland County By warrant
 of the 26th day of October, 1785.

John Lukens Esq.
 J. Genl.

Joshua Elder D. J.

IN TESTIMONY that the above is a copy of the original remaining on file in
 the Department of Internal Affairs of Pennsylvania, made
 conformably to an Act of Assembly approved the 16th day of
 February, 1833, I have hereunto set my Hand and caused
 the Seal of said Department to be affixed at Harrisburg,
 this fifth day of November, 1901,

James W. Fattice
 Secretary of Internal Affairs.